

coronado park



The Pavilion

The space efficient *Pavilion* floor plan includes:

1 bedroom + den / 1 bathroom

Oversized 1 car garage at the rear of the home

916 square feet

Base prices start at \$TBD

Up to \$3,000 in Closing Cost Assistance

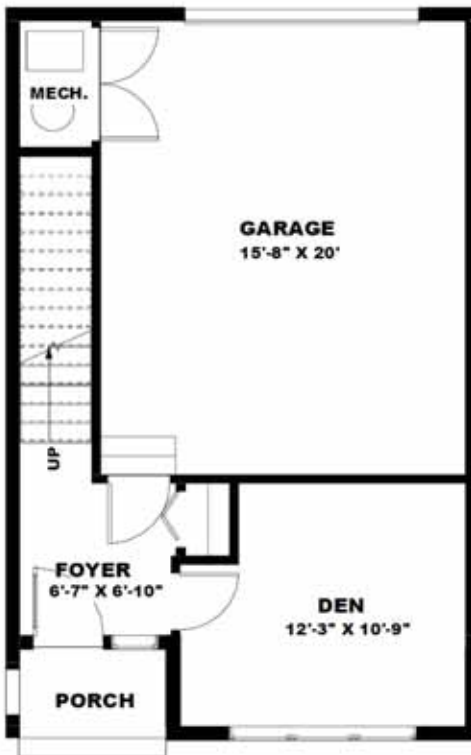


Gordon Sloane
907-244-3381
Gordon@ADHomeGroup.com



www.ThePetersenGroup.com

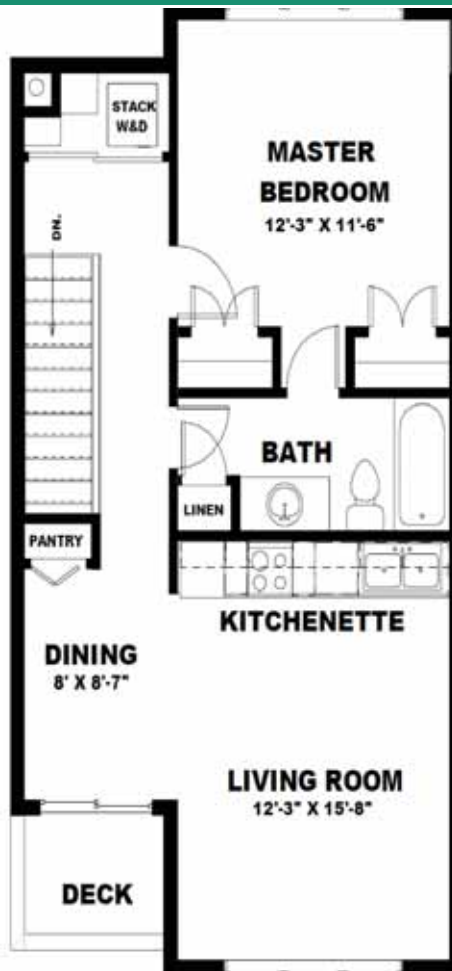
The Pavilion



Main Level Features

- Covered front porch.
- Large foyer.
- Conveniently located coat closet.
- Spacious den.
- Oversized single car garage with storage area.
- 176 square feet of living area.

1 bedroom + den / 1 bath / 1 car garage



Upper Level Features

- High vaulted ceilings in living room
- Laundry area
- Space efficient kitchen with stainless steel appliances
- Pantry
- Dining area with deck access
- Master suite with two generous closets
- Large bathroom with linen closet
- 740 square feet of living area

All square footages are approximate. Floorplans, elevations and interior finishes may vary. Items on floorplans in finished homes, renderings or photos may be options, upgrades or allowance overages and may not be included in the base price. This home is not complete and price shown is BASE PRICE only. Call listing licensee for current price reconciliation which will include any installed options, upgrades and allowance overages. Builder reserves the right to change prices at any time without notice. See Licensee for details.

Revised 3/05/2020