

coronado park



The Plaza

The generous *Plaza* floor plan includes:

2 bedrooms / 2 bathrooms

2 car garage in the rear of the home

1276 square feet

Base prices start at \$TBD

Up to \$3,000 in Closing Cost Assistance

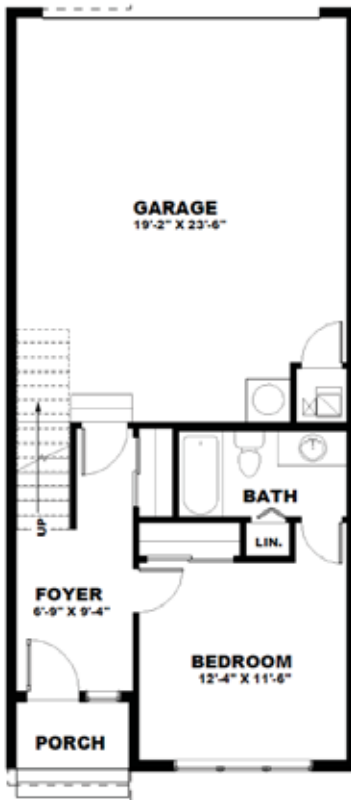


Gordon Sloane
907-244-3381
Gordon@ADHomeGroup.com



www.ThePetersenGroup.com

The Plaza



Main Level Features

- Covered front porch
- Large foyer
- Conveniently located coat closet
- Large bedroom with private bath and linen closet
- Large 2 car garage
- 373 square feet of living area

2 bedroom / 2 bath / 2 car garage



Upper Level Features

- High vaulted ceilings in living room
- Laundry area
- Large U shaped kitchen with stainless steel appliances
- Large kitchen pantry
- Dining area with deck access
- Master suite with walk-in closet
- Large bathroom with double vanity, linen closet, and private commode
- 903 square feet of living area

All square footages are approximate. Floorplans, elevations and interior finishes may vary. Items on floorplans in finished homes, renderings or photos may be options, upgrades or allowance overages and may not be included in the base price. This home is not complete and price shown is BASE PRICE only. Call listing licensee for current price reconciliation which will include any installed options, upgrades and allowance overages. Builder reserves the right to change prices at any time without notice. See Licensee for details.

Revised 3/05/2020