

CLEARWATER VILLAGE

at Creekside..... better living by design.



The Creekview II

Priced from \$322,900



Features of "The Creekview II"

- 3 bedrooms and 3 bathrooms
- Computer Niche
- Approximately 1,740 sq. ft.
- Two-car tandem garage
- Townhouse-style homes
- 9-ft. ceilings on 1st & 2nd floor
- Upscale shaker-style features
- Mountain views

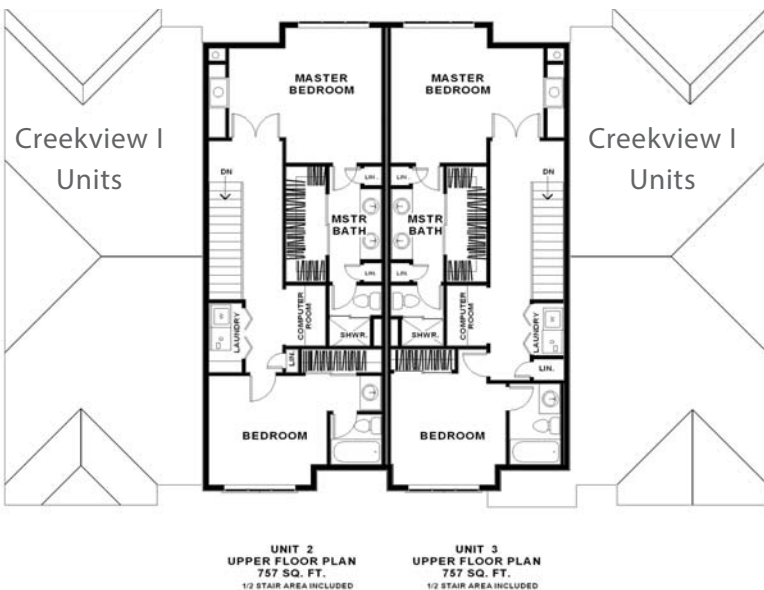
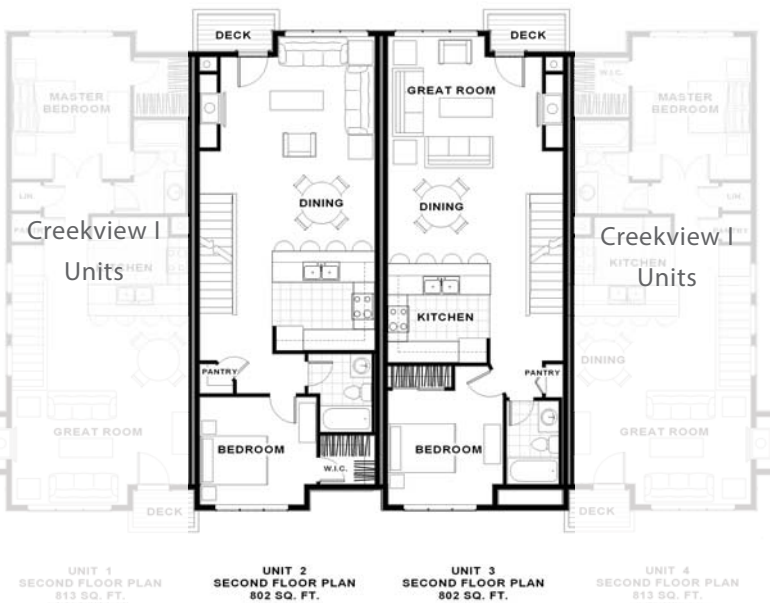
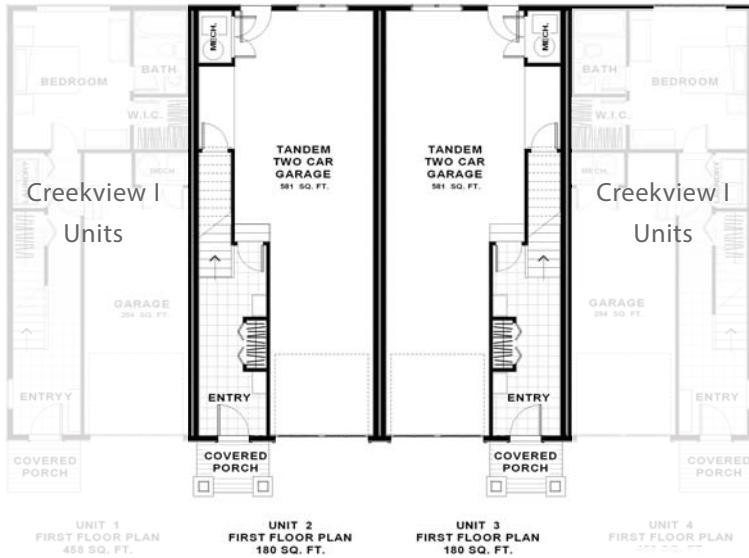
Up to **\$3,000***
in Closing Cost Assistance
*see listing licensee for details and
restrictions.



Karen Glaser
Associate Broker
(907) 317-2000



"The Creekview II"



"The Creekview II" Features

- Approximately 1,740 sq. feet
- 3 bedrooms and 3 baths
- Computer niche
- 3-stories
- Open great room design
- Two-car tandem garage
- Townhouse-style homes
- 9-ft. ceilings on 1st & 2nd floor
- Upscale shaker-style features
- Mountain views
- Enhanced landscaping
- Creekside location



Represented by:



Builder reserves the right to revise prices at any time without notice. Some items shown on floorplans may be options and not included in base price.

Rev. 04/07/2015

learn more at
www.ThePetersenGroup.com

The Petersen Group, Inc * 3820 Lake Otis Parkway * Anchorage * AK * 99508 (907) 562-1170