

MODERN TOWNHOMES NEAR THE HEART OF DOWNTOWN ANCHORAGE

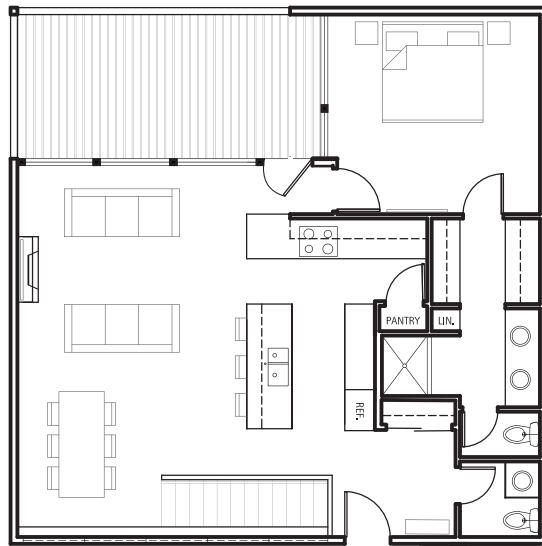
www.ThePetersenGroup.com



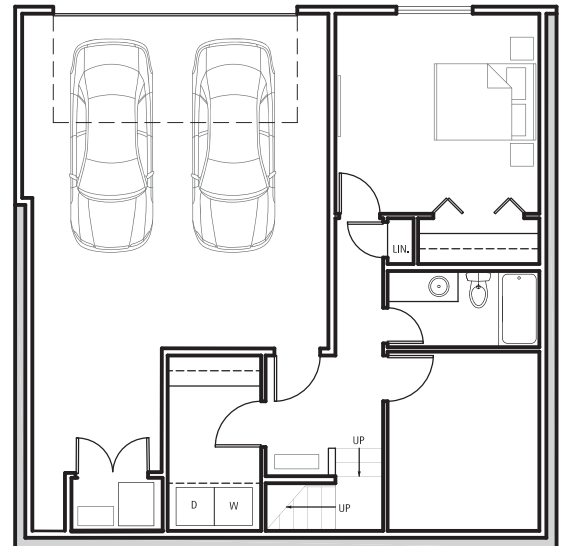
THE LANDING - 2/2.5/2 - 1698 SF

- Bedrooms: 2**
- Bathrooms: 2.5**
- Garage: 2**
- Area : 1698 SF**

At a comfortable 1698 SF, the Landing, takes advantage of the beautiful views with floor to ceiling windows in the main living area and a huge 205 square foot deck that allows an extension of the living space. Quality features include a large 2 car garage, separate bedrooms for added privacy and large storage/flex space. Prices start at \$614,900



Upper Level



Lower Level




Jon Wagner
907-360-4884
jonathonwagner@kw.com
KW ALASKA GROUP
KELLERWILLIAMS, REALTY

All Square footages are approximate. Floorplans, elevations and interior finishes may vary. Items on floorplans in finished homes, renderings or photos may be options, upgrades or allowance overages and may not be included in the base price. This home is not complete and price shown is BASE PRICE only. Call listing licensee for current price reconciliation which will include any installed options, upgrades and allowance overages. Builder reserves the right to change prices at any time without notice. See licensee for details. Revised 6/22/2020