



Sonoma Glen
AT WEST PARK

KENWOOD I - AVAILABLE IN FUTURE PHASES

1686 square feet

3/2.5/1

Priced from \$TBD

STANDARD FEATURES

- 3 Bedrooms
- 2.5 Baths
- 1 Car Garage
- 5 Star Energy Rating
- Stainless Steel Appliances
- 9" Ceilings on main level
- Extensive closets with space saving organizers
- Direct Vent Gas Fireplace
- Large rear deck backs up to planned green space with the option of enclosing a private backyard area



GORDON SLOANE

Realtor

907.244.3381

Gordon@theSDHomeGroup.com

KW ALASKA GROUP
KELLER WILLIAMS REALTY

UP TO **\$3,000** IN CLOSING COST ASSISTANCE.
See listing licensee for detail and restrictions.

Prices noted are base prices only. All square footages are approximate. Floorplans, elevations and photos or renderings may vary. Items on floorplans, elevations or photos may be options, upgrades or allowance overages and may not be included in price. Builder reserves the right to change prices at any time without notice. Please see Gordon Sloane for details of upgrades or options in homes under construction and for sale.

Revised 4/19/18



Sonoma Glen
AT WEST PARK

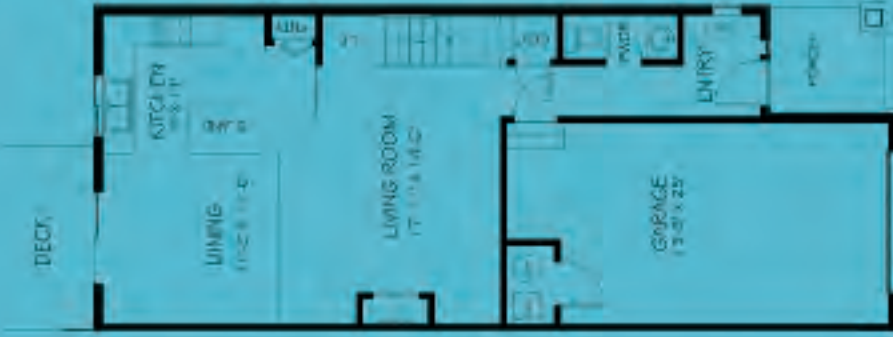
KENWOOD I

Floor Plan Layouts

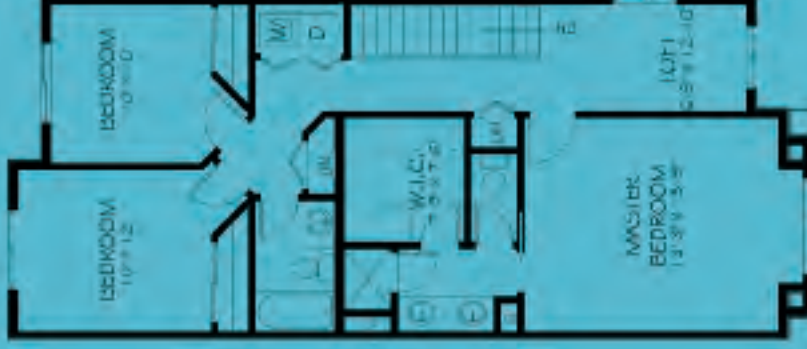


- Traditional floorplan with all bedrooms upstairs
- Covered Entry
- Gourmet kitchen with center island and large pantry
- Open living and dining room
- Spacious master suite with double vanity, private commode and walk-in closet
- Upstairs loft and laundry room

1ST FLOOR



2ND FLOOR



1686 square feet

FROM \$TBD



www.TPGAK.com